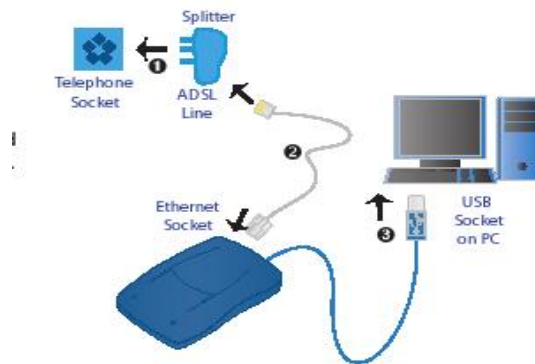


INSTALLATION OF MODEM - SAGEM F@st 800/840

Installation is very simple, all you should do is follow the steps mentioned below:

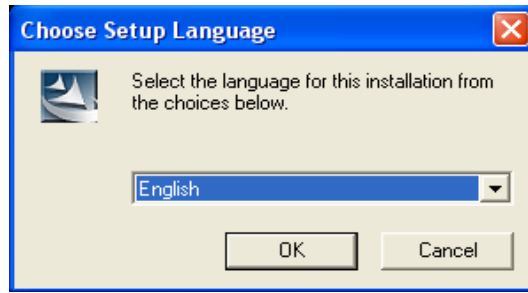
1. Connect ADSL line with your modem, as shown on picture.
2. Do not connect USB cable of your modem with computer.



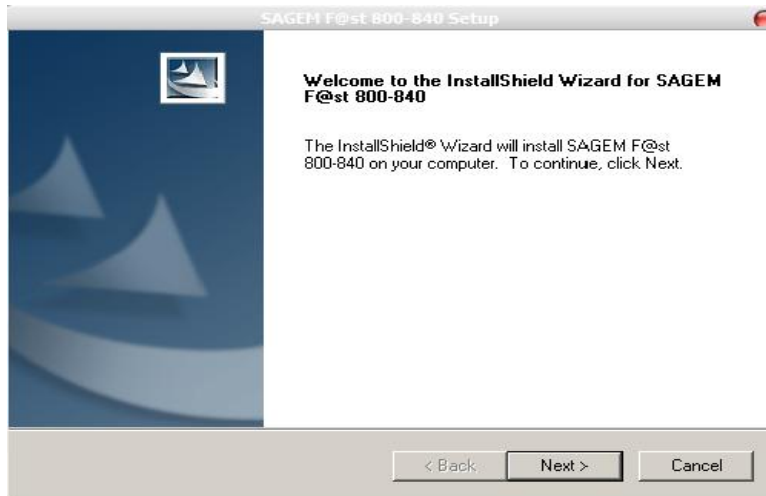
1. Insert installation CD in your CD ROM.



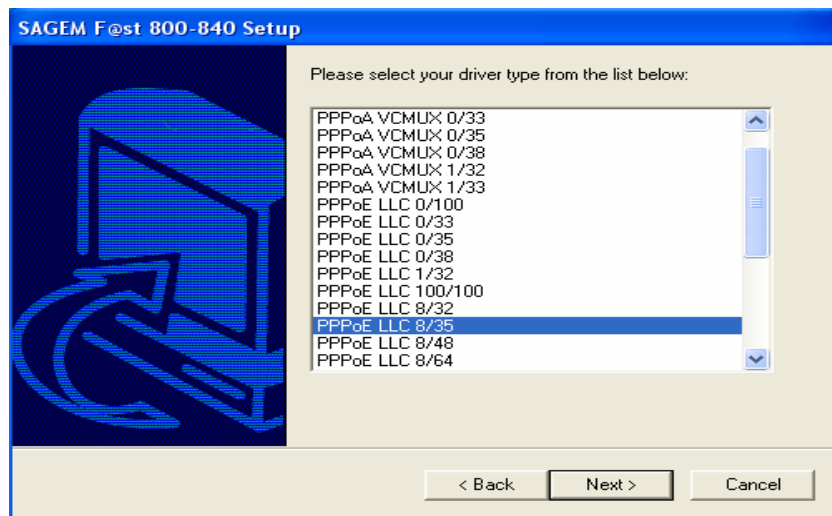
2. Click on Install the modem.



3. Choose English language, click on OK.



4. Click on NEXT.



5. Choose option **PPPoE LLC 8/35**, as shown on picture:

Click on NEXT and wait for installation to end.

6. After completed installation, following window on your desktop shall appear:



7. Connect USB cable from your modem with your computer, click OK. After modem detection restart computer.

On your desktop you will have new icon that represents your connection.



Open it and insert your username and password, gained during opening ADSL account.

Username has to be inserted in form:
username@verat.net

For any additional information, contact us on: 011/2444 318.